

Byfleet Running Festival (BRF) 2018 Event Information

Supported by



Wingate & Withers
ESTATE AGENTS

This is now the fifth year of the Byfleet Running Festival where we are raising funds towards our major project to refurbish, extend and improve the facilities available at St Mary's Church and Community Hall in Byfleet.

Phase 2 is now almost complete, so this is a final fundraising push to equip our newly refurbished office/meeting rooms.

This year we are also contributing towards the funding for a disabled friendly access path to the church and churchyard as well as recognising our relative wealth by supporting the Bishop of Guildford's Foundation which funds many projects in deprived areas of Surrey.

The courses are 99% off road using the Wey Navigation and Basingstoke Canal towpaths and both races are fully marshalled and chip timed.

Once again we are pleased that Nuffield Health are supporting us by providing on the day race management as well as prizes for 1st, 2nd and 3rd in both seniors and masters, male and female categories plus all finishers will also receive a medal.

Charges are as follows:

10K race	£19.50	start time 10:00am
5K race	£12.50	start time 10:06am

Children aged 11+ may enter the 5K or 10K as individual runners (full price).

Children under 11 may run the 5K for £8 by entering on the day, but must run with a full paying parent/guardian.

All runners run at their own risk and all novice/first time runners are advised to book a health check with their GP prior to competing.

We will also have 4 children's races that can be entered on the day (up to 11am for £3) with medals for all finishers. These will start once the majority of the 10K runners have finished (estimated to be about 11:15am):

Ages 3-5	1 lap
Ages 5-7	2 laps
Ages 7-9	3 laps
Ages 9-11	4 laps
(each lap is approx 320m)	

For the main races we will be able to accept a few entries on the day but reserve the right to remove this facility if it becomes too busy for our limited registration resources; so to guarantee your place please enter online.

Race HQ is at the church hall in Church Road, Byfleet, postcode KT14 7NF.

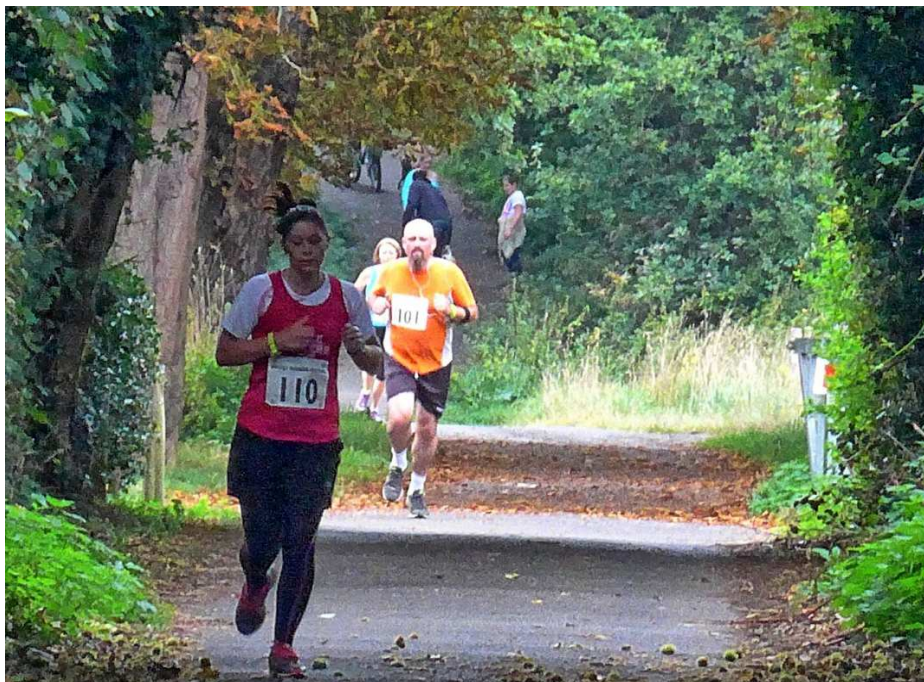


Please note that race numbers and timing chips will not be sent out in advance of the race. These will need to be collected at the race registration desk on the morning of the event so please leave plenty of time for this. Race registration will be at St Mary's Church Hall (opposite the Church), open between 8am and 9:30am. There will also be a secure bag drop at the hall which will remain fully staffed during the event.

Free parking will be available at the Church Hall, however if you find yourself needing to park on local roads we ask that you are considerate to the need for access for local residents.

Toilets will be available at the Church Hall however there will be no separate changing facilities so we ask that you arrive "ready to run"!

Refreshments will be available throughout the morning for your non-running supporters and for you to refuel once your race is done, so please bring friends and family to cheer you on as we are hoping for a great family atmosphere once again.



The Courses

Both courses start with 2 laps of the field and then head out over the M25 and onto the canal towpaths. There will be one water station on the 10K route at around 6K.

We request that you DO NOT wear headphones during the event on safety grounds.